

Movebot the best all-round data migration for UpCurve Cloud



Jared Lohsl
Deployment Engineer
Upcurve Cloud

As a deployment engineer, Jared Lohsl has used a number of cloud migration technologies over the years.

But the Indiana-based lead tech for San Diego headquartered UpCurve Cloud considers Movebot to be the best all round package for shifting data to their partner's Google cloud platform. UpCurve are digital transformation specialists.

"Movebot's set-up is easy, its reporting interface is wonderful, and it's quick," says Jared.

"It is also relatively hands-free, and once you've set it up correctly, Movebot chugs away in the background.

"We've moved terabytes and terabytes of files using it and it simply sends data where it is meant to go."

Jared says that Movebot's live back end view is also extremely helpful.

Other migration tools mostly require waiting until the end of a data transfer to dig into any errors which almost invariably occur.

"Movebot gives you a live feed of errors. You can look into them sooner, clean them up quicker," he says.

As well as moving data files from one cloud platform to another, Movebot has the ability to work with company on-premise servers.

"These types of file transfer are often a 'gotcha' for cloud migration," Jared says. "But it is a potential headache that Movebot seamlessly deals with, and that in turn makes my job much easier."

"I can see what's going on as the migration happens. The quicker you can see errors, the quicker the fix. I spend less time working in any particular transfer, which allows me more time to focus on staying up with new features in Google's ever changing environment."

Another advantage is that Movebot can provide an initial scan of UpCurve Cloud's clients' files, and provide a very accurate estimate of how long all the data will take to transfer. This in turn allows UpCurve Cloud to provide a quick and precise quote for any particular job.

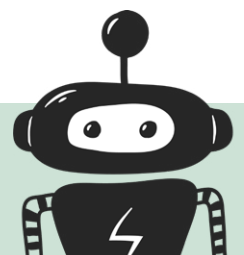
This initial scan also indicates whether there would be an item limit (approximately 400,000) for transfer into Shared Drives. The data can be split up beforehand, and not become an issue with Google itself preventing upload.

"I can't overstate how useful this feature is," he says.

Movebot's reporting interface provides line items of files and folders which have failed to transfer from location A to location B. As well, the exact reason for the failure – a permission, corrupt file, virus or other – can be provided to UpCurve Cloud's customer, allowing a correction to be made.

"The reporting ability that Movebot provides is a fantastic feature," Jared says.

"I can see what's going on as the migration happens. The quicker you can see errors, the quicker the fix. I spend less time working in any particular transfer, which allows me more time to focus on staying up with new features in Google's ever changing environment."



Case Study

Movebot improves UpCurve Cloud's customer experience

Challenge

For UpCurve Cloud, (digital transformation specialists) to move their customers to the Google workspace and cloud, and provide surety, security, speed and accurate price information for that journey.

To be confident that the data migration component of the move is transparent and easy to carry out.

Solution

Movebot, a superior cloud data migration tool which provides exceptionally fast, simple and cost-effective transfers of even the largest and most complex of files.

Among the advantages of the Movebot tool are:

- Ease of use
- Great error logging visibility
- Pre-scans with issue flagging
- Granular permission mapping
- User friendly GUI
- Easy migration mapping
- The support is their number one bonus over everything
- They've built custom connectors when we needed certain items migrated
- Quick response time through email/chat with any questions we've had

Rationale

After a small trial, and then a 2 TB file transfer trial Movebot proved itself to have a speed and technology which separated it from the pack of its competitors.

The partnership between Movebot and UpCurve allows UpCurve to instantaneously quote their customers and expedite the sales cycle.

Movebot's superior interface, reporting and user interface makes it better than other available tools.

Finally, Movebot's audit log helps troubleshoot any transfer errors (or even pauses) which often occur when large quantities of data are migrated to a new cloud platform.

Outcome

UpCurve is able to provide an exceptional customer experience, some of which is centred around Movebot's safeguarding of data transfer, at a price that is able to be locked in before the migration begins.

UpCurve's alliance with Movebot contributes a market advantage that complements its digital transformation expertise.

