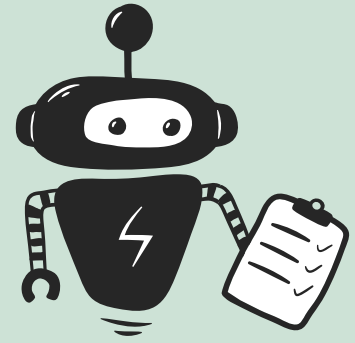


# Platform Feature Matrix

Learn how comprehensive Movebot is and how it can support your migration project needs.



## Movebot Platform Support

Platform	Files	Permissions	Shared Content	File Versions	Modtime
Google Drive (consumer)	<ul style="list-style-type: none"> <li>All files</li> <li>Google Docs Export</li> </ul>	✓	✓	✓	✓
Google Workspace	<ul style="list-style-type: none"> <li>Users</li> <li>Shared Drives</li> <li>Google Docs Export</li> </ul>	✓	✓	✓	✓
Dropbox (consumer)	<ul style="list-style-type: none"> <li>All files</li> <li>Shared Content</li> <li>Dropbox Paper (html)</li> <li>Google Docs Export</li> </ul>	✓	✓	✓	✓
Dropbox Business	<ul style="list-style-type: none"> <li>Users</li> <li>Team Drives</li> <li>Team Spaces</li> <li>Individual User Content</li> <li>Shared Content</li> <li>Dropbox Paper Export</li> <li>Google Docs Export</li> </ul>	✓	✓	✓	✓
OneDrive (consumer)	<ul style="list-style-type: none"> <li>All files</li> </ul>	✓	✓	✓	✓ (not compatible as destination)
0365 SharePoint Online	<ul style="list-style-type: none"> <li>OneDrive Business users</li> <li>SharePoint Document Libraries</li> </ul>	✓	✓	✓	✓ (not compatible as destination)
SharePoint on-premises	<ul style="list-style-type: none"> <li>Users</li> <li>SharePoint Document Libraries</li> </ul>	✓			✓ (not compatible as destination)
Egnyte	<ul style="list-style-type: none"> <li>Users</li> <li>Shared Folders</li> <li>Google Docs Export</li> </ul>	✓	✓	✓	✓
Box	<ul style="list-style-type: none"> <li>Users</li> <li>Shared Folders</li> <li>Google Docs Export</li> <li>Box Notes Export</li> </ul>	✓	✓	✓	✓
Citrix Sharefile	<ul style="list-style-type: none"> <li>Users</li> <li>Shared Drives</li> <li>Inboxes</li> </ul>	✓	✓	✓	✓

## Movebot Platform Support Continued

Platform	Files	Permissions	Shared Content	File Versions	Modtime
Windows File Servers	<ul style="list-style-type: none"> <li>• Network Attached Storage</li> <li>• Data on local systems</li> <li>• Data on remote systems (UNC path supported)</li> </ul>	✓			✓
OSX	<ul style="list-style-type: none"> <li>• Network Attached Storage</li> <li>• Data on local systems</li> <li>• Data on remote systems</li> </ul>				✓
SFTP	<ul style="list-style-type: none"> <li>• All files</li> </ul>				✓
Nasuni	<ul style="list-style-type: none"> <li>• All files</li> </ul>				✓
Panzura	<ul style="list-style-type: none"> <li>• All files</li> </ul>				✓
Amazon S3	<ul style="list-style-type: none"> <li>• All files</li> </ul>				✓
S3 compatible	<ul style="list-style-type: none"> <li>• All files</li> </ul>				✓
Azure Files	<ul style="list-style-type: none"> <li>• All files</li> </ul>				✓
Azure Blob	<ul style="list-style-type: none"> <li>• All files</li> </ul>				✓
Google Cloud Storage	<ul style="list-style-type: none"> <li>• All files</li> </ul>				✓
Wasabi	<ul style="list-style-type: none"> <li>• All files</li> </ul>				✓
Backblaze	<ul style="list-style-type: none"> <li>• All files</li> </ul>				✓
Filebase	<ul style="list-style-type: none"> <li>• All files</li> </ul>				✓
BiFrost Cloud	<ul style="list-style-type: none"> <li>• All files</li> </ul>				✓
IDrive Cloud	<ul style="list-style-type: none"> <li>• All files</li> </ul>				✓
BoomSync	<ul style="list-style-type: none"> <li>• All files</li> </ul>				✓

## Product and Team

Product	Movebot	Competitors	Rclone
<i>General</i>			
Simple and intuitive web UI	✓		
Fully managed and hosted, no software or server provisioning (cloud to cloud migrations)	✓	✓	
Migrate Calendar, Contacts, Emails	✓	✓	
Sign up and go, no need to talk to sales	✓		✓
Pay as you go, zero upfront cost	✓		N/A
Cost per GB, not per user	✓		N/A
Free no commitment comprehensive pre-migration discovery scan	✓		

## Product and Team Continued

Product	Movebot	Competitors	Rclone
<i>General Continued</i>			
Full visibility and simple dashboard that provides progress and details based on each transfer mapping	✓	✓	
Transparent logging and graphs, pre, during, and post-migration (rate-limiting, worker logs, permissions, and file reports)	✓		
Ability to create additional users to collaborate with migration	✓	✓	
<i>Infrastructure</i>			
Secure and scalable agent for on-premises file servers	✓		
Data sovereignty with choice of region for data transfers	✓		✓
Temporary worker nodes and no shared resources between customers and projects	✓		
Granular infrastructure controls (control threads and worker nodes)	✓		
No sync or file retention, data is streamed between platforms in real-time	✓		✓
Fast and scalable data transfer (up to 10TB/day into collaboration platforms)	✓		
<i>File and Content Control</i>			
Automatic file sanitization and resolution between platforms	✓	✓	
Extensive automatic error handling and simple to rerun file failures	✓		
Google Doc export to Microsoft format	✓	✓	
Adaptable and granular file, user, and folder mapping regardless of platform (user to team drive, user's subfolder to Team Drive, On-prem UNC path to Team Drive)	✓	✓	✓
Content exclusion and inclusion (file sizes, based on modtime, file types, etc.)	✓	✓	✓
Granular permission mapping and exclusion (map permissions between platforms, exclude based on domains or emails, and map different users permissions to different users)	✓	✓	
Configure in-flight filename and character transformation	✓	✓	
<i>Security and Compliance</i>			
Natively secure through industry best practices and architecture isolation	✓		
SOC2 Compliant	✓		
Token revoking after period of inactivity	✓		
<i>Team</i>			
Experienced team of professional services who understand the product and cloud platforms	✓	✓	
24/7 and on-demand support through multiple channels	✓		